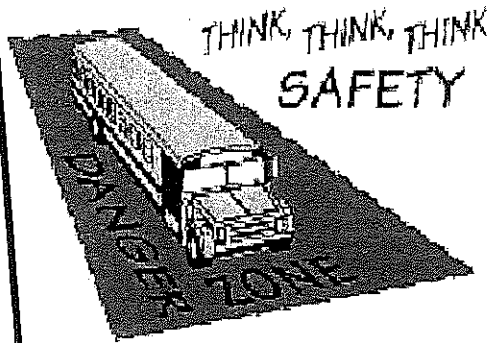


Kids, Do you know
The Danger Zones?



The Danger Zone is the area on all sides of the bus where children cannot be seen by the bus driver and are in the most danger of being struck by the bus.

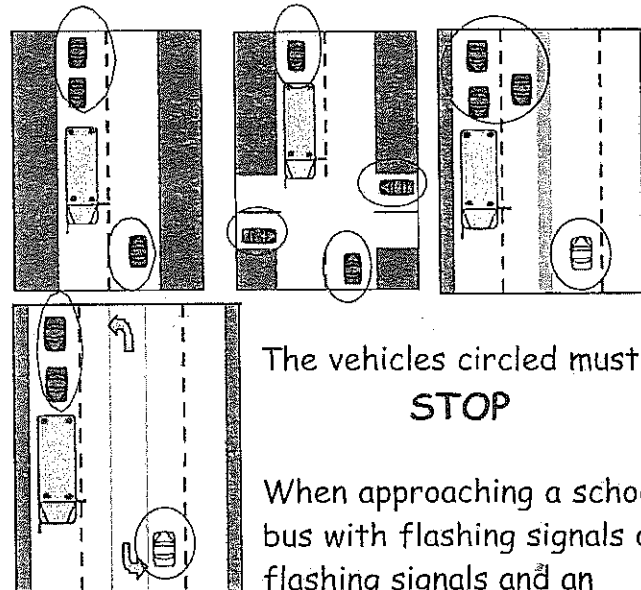
FRONT DANGER ZONE—The area which extends ten feet in front of the bus

SIDE DANGER ZONE—The area which extends ten feet on each side of the bus

REAR DANGER ZONE—The area which extends ten feet behind the bus

If you can touch the bus
you are **TOO CLOSE!!!!**

Do you know the Rules for Motorists?



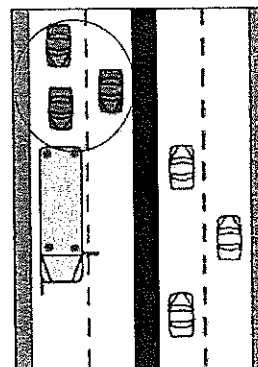
The vehicles circled must
STOP

When approaching a school bus with flashing signals or flashing signals and an

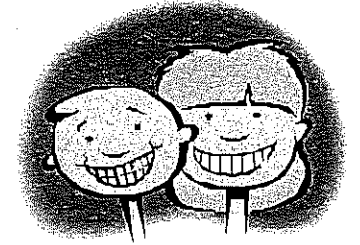
extended stop sign on a public or private road, you **must stop** and remain stopped until all children are clear of the roadway and the bus moves again.



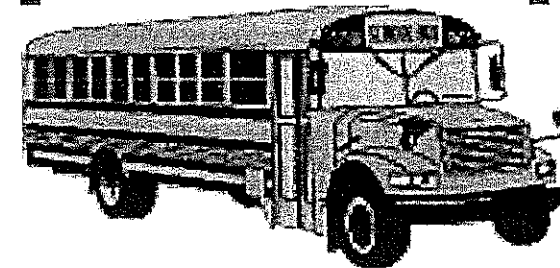
You **must also stop** if the bus is loading or unloading children and the signal devices are not functioning properly.



You **do not** have to stop if you are traveling in the **opposite** direction on roadways separated by a **physical barrier or unpaved median area**



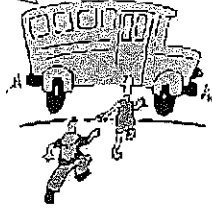
School Bus Safety
And Me



Commonwealth of Virginia
Department of Education
Pupil Transportation Services
101 North 14th Street
Richmond, Virginia 23219
804-225-2037

This brochure was printed with a
grant from the Virginia
Department of Motor Vehicles

School Bus Safety Is For Everyone



Prevention is the best solution to the issue of school bus safety.

Kids are not the only ones who need to know the rules of school bus safety.

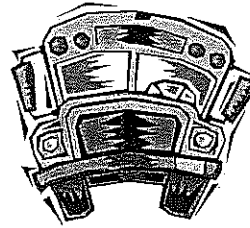
Parents and motorists must be aware of the school bus safety rules while children are waiting at the bus stop or loading and unloading.

Learning the "flashing light system" that school bus drivers use to alert motorists is the first step in helping all children get to school safely.

Yellow flashing lights indicate the bus is preparing to stop to load or unload children. Slow down and prepare to stop.

Red flashing lights and extended stop arm indicate the bus has stopped and children are loading or unloading. You must stop and remain stopped unless otherwise stated by law.

School Bus Safety Rules For Kids



Walk to the bus stop.

Walk on the sidewalk. If there is no sidewalk, walk on the left facing traffic.

Be at the bus stop at least five minutes before the bus is scheduled to arrive.

If you are late, **NEVER** run to catch a moving bus.

While at the bus stop, wait in a safe place away from the road.

Do not run and play while waiting.

When the bus arrives, stay away from the Danger Zones.

Make sure the bus is stopped and the red school bus warning lights are flashing and the stop and crossing arms are extended before getting on the bus.

When entering the bus hold the handrail.

Watch out for dangling pieces of clothing, drawstrings on hoods or backpack straps that could get caught on the handrail.

When riding the bus, take your seat quietly and remain seated when the bus is moving.

Safety Rules For Parents

Make children stay at least 10 feet away from the bus until the driver says it's O.K. to enter. Children will then be able to see the driver and the driver can see them.

If children must cross the street to the bus, remind them to wait for the driver to signal that it is safe to cross. They should cross the street at least 10 feet in front of the bus.

Warn children that if they drop something, they should tell the driver and follow the driver's instructions. If they bend over to pick up a dropped object, they might not be seen by the driver and could be hurt if the bus pulls away.

Remind children to look to the right before they step off the bus.

Remind children to respect the property of others while waiting for the bus.

Help your child learn the rules and make school bus safety a success.

*Working together we
can help keep our kids
safe*